

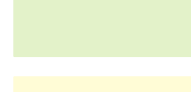
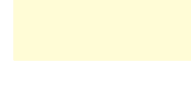
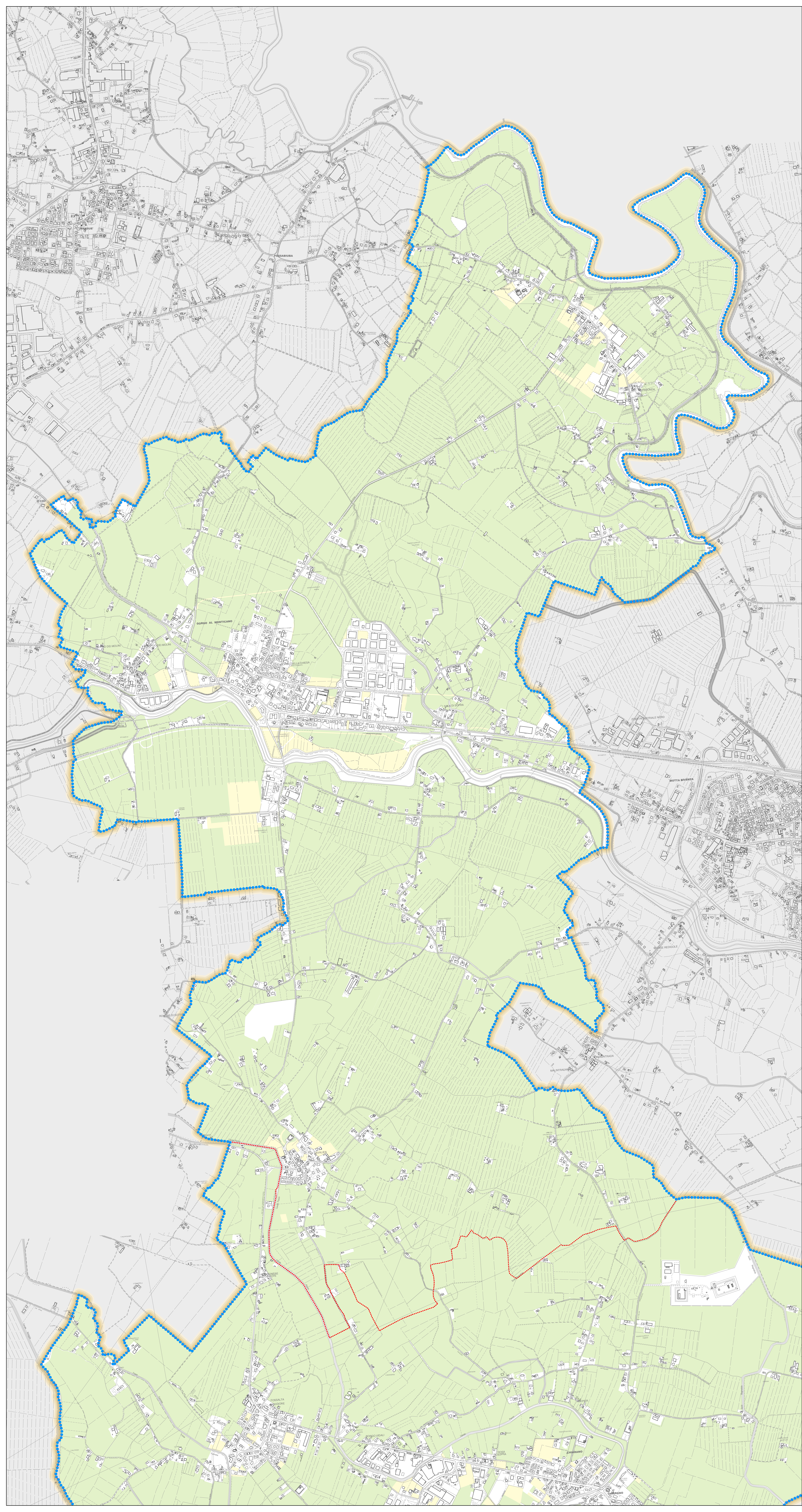

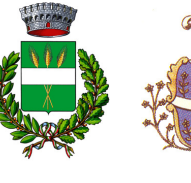



LEGENDA

-  Limite amministrativo del PATI
-  Limiti amministrativi dei comuni
-  SAU - Zona Agricola
-  SAU - Zona non Agricola






Comuni di:
Chiara
Gorgo al Monticano
Portobuffolè

Regione Veneto

P.A.T.I.

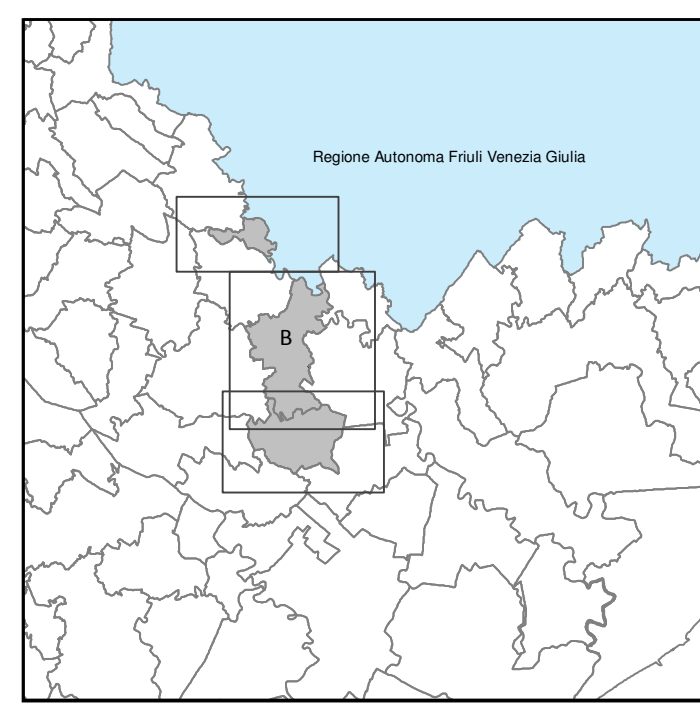
Piano di Assetto del Territorio Intercomunale



Provincia di Treviso

Elaborato: TAV. A6.B
Scala: 1:10.000

CARTA DELLA SUPERFICIE AGRICOLA UTILIZZATA



Progettisti
arch. Walter GRANDOTTO
urb. Francesco FINOTTO
arch. Leopolda SACCON

Collaboratori
urb. Marco ROSSATO
urb. Alberto AZZURRA
urb. Michele SACCON
dott. Alberto GRAVA

Uffici tecnici
arch. Claudio TALLON - Chiara
arch. Stefano BRACCA - Gorgo al Monticano
geom. Chetlyn GIACOMINI - Portobuffolè

Co-Progettazione
Provincia di Treviso

Sindaci:
Loriana ROCCO (Chiara - Capofila)
Giannina COVER (Gorgo al Monticano)
Andrea Sebastiano SUSANA (Portobuffolè)

Redatto: Gennaio 2016
Approvato:

LEPCO TEPCO s.r.l.
33029 Vidor Veneto (Treviso) Via Dante Alighieri, 13
P.IVA 02397223267 tel. 0423/211111 fax 0423/211174
e-mail: lepc@lepc.it - web: www.lepc.it

PROTECO Proteco s.p.a. s.r.l. s.p.a. s.p.a.
33027 San Donà di Piave (Treviso) Via Cesare Battelli, 39
P.IVA 01888701305 tel. 0423/50811 fax 0423/50812
e-mail: proteco@proteco.it - web: www.proteco.it

Isol. coord. e Progettazione Tecnica Organizzata